

NOVISTONE™ DS
Premium Series

**Endless possibilities
with Novistone™ DS - Dry Stack Stone**



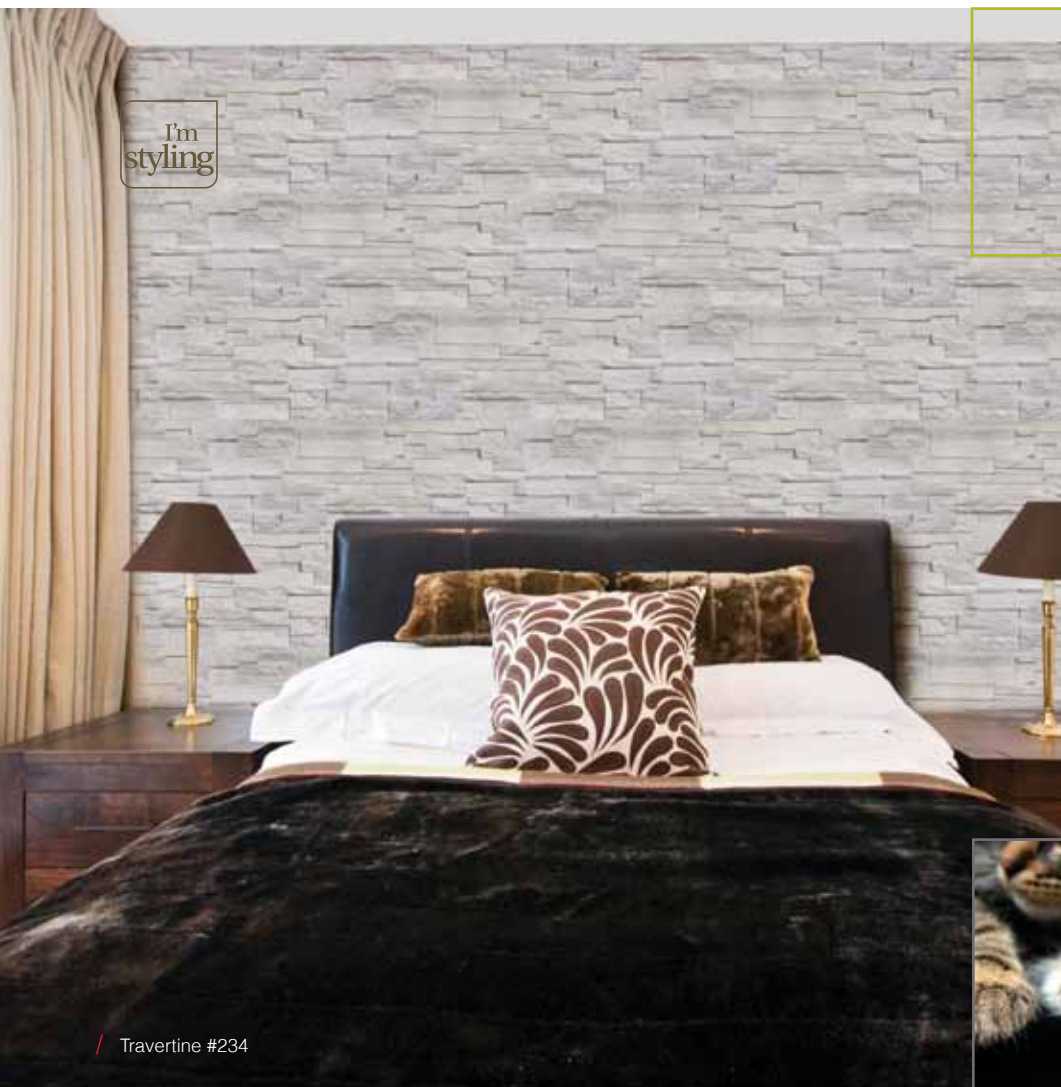
Designed to inspire / Conceived to perform / Made to last

DESIGNED TO INSPIRE

With its industry-leading technology and expertise, Novik® has created a product with the amazing look and feel of a dry stack stone wall.

As beautiful outside as inside, as traditional as it is contemporary, Novistone™DS - Dry Stack Stone was designed to inspire a world of possibilities no matter what your style or vision:

- / Indoor and outdoor decor
- / Foundations, facades, architectural accents, gazebos, hot tub sides
- / Decorative interior walls, beams
- / New construction or renovation, residential or commercial



PATENTS
PENDING

MADE TO LAST

Novistone™DS-Dry Stack Stone is injection-molded from superior quality polymer. The result is a surface that defies the ravages of time.

- / Extreme temperature variation resistance
- / Expansion, contraction, warping and cracking resistant
- / Discoloration resistant (UV rays)
- / Limited lifetime warranty



UNPARALLELED BEAUTY

Give your architectural style a distinctive look at an attractive price:

- / A wealth of possible uses
- / Works with all styles of decor
- / Trendy colors
- / Flawless finish
- / Quick and easy to install
- / Virtually maintenance free



/ Limestone #235



/ Lava #236



/ Limestone #235

Novik® has the required documents for the LEED® documentation and can provide all the information for a project.*



*Requirements for Canada LEED® for homes 2009.

CONCEIVED TO PERFORM

	PANEL	CORNER
Overall Dimensions	41.75" (106,05 cm) x 13.13" (33,34 cm)	1 piece = 15.63" (39,69 cm) x 5.78" (14,68 cm) 2 pieces = one corner
Box Size	42.63" (108,28 cm) x 13.75" (34,93 cm) x 9.5" (24,13 cm)	16.25" (41,28 cm) x 9.06" (23,02 cm) x 8.13" (20,65 cm)
Qty pieces/box	10	5 complete corners (10 pieces)
Coverage/box	25 square feet /2,32 m ²	6.3 lin. ft./1,9 m lin.
Starter strips and accessories: Universal polymer starter strips, NoviTrim 1 or NoviTrim 4		

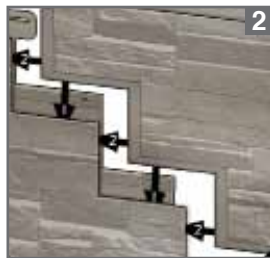
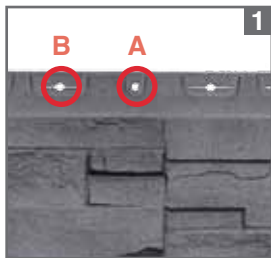


/ Limestone #235

FAST-
series **FIT**



/ Travertine #234



- 1. A)** Center nailing hole: helps spread the panel's expansion and contraction evenly.

B) Nail locators: facilitate the installation by precisely showing proper nail location.
- 2.** Staircase interlocking system: facilitates panel alignment.

- 3.** Continuous full panel interlocking system for secure and rapid installation.
- 4.** « Hammer-stopper » System: helps limit nail penetration to ensure smooth panel expansion and contraction.

Multifunctional 2 in 1 corner: can be used as an inside or outside corner.

TEXTURE



NOVISTONE DS PERFORMANCES

FIRE Rating (In accordance to ASTM E84) Flame Spread < 200

IMPACT Resistance (In accordance to ASTM D4226) > 35 po-lbf

Accelerated **U.V.** exposure (In accordance to ASTM G154/G155/D1435) Virtually no fading

WINDS (In accordance to ASTM E72/D5206) Surpassed requirements of 160 mi/h (258 km/h)

*All testing in accordance with ICC-ES AC308 (Acceptance criteria for polymer siding systems).
Product certified by independent laboratories.

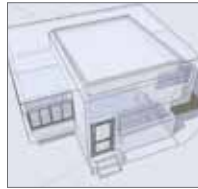


/ Basalt #229



/ BRIGITTE POITRAS,
Designer stylist
Idéco, Montréal

«The new innovative NoviStone™ - Dry Stack Stone combines with contemporary, urban or traditional styles to create a more unique and personalized decor.»



/ LINE ROUSSEAU,
Architectural technologist
Architecture Le Corbusier,
Québec

«This product offers a multitude of creative possibilities to dress interior and exterior projects.»



/ CATHERINE TREMBLAY,
Architectural Designer
Sillery, Québec

«Finally, an innovative product that's both desirable and affordable! This dry stack stone manages to combine high-end design and great quality at a remarkably reasonable price.»



/ Anthracite #233



/ Beige Granite #228

TRENDY COLORS



staytrü
color technology

Product availability

Authorized distributors. Contact us for more information on your local distributors.



Click on the following link for detailed installation instructions.

NOVIK[®]
architectural exteriors & accents

Phone: 418 878-6161 / Toll-free: 888 847-8057

info@novik.com / www.novik.com